

Slow practice track 27

6. REEL

TG

Jolly



f



Heel toe heel toe



Heel toe heel toe

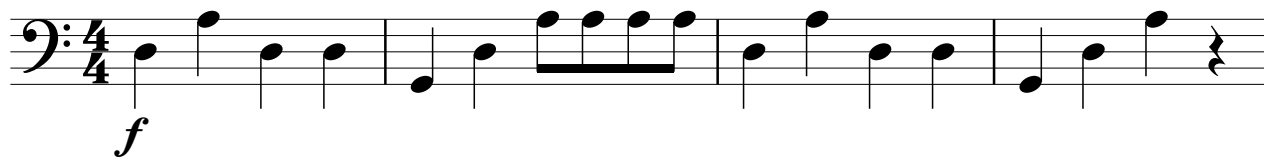
Knees up knees up



Knees up knees up

Accompaniment

Jolly



11. Oh When the Saints!

Jolly (Start with an up bow!)

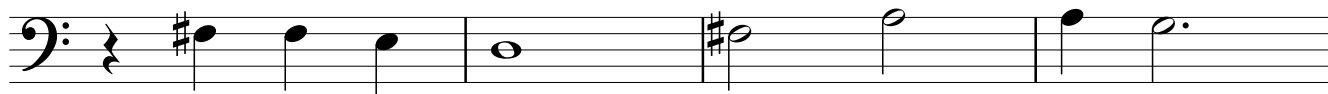
Trad.



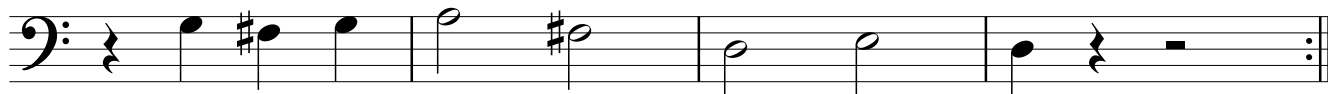
f Oh, when the saints go march - ing in,



oh, when the saints go march - ing in.



I want to be in that num - ber,



oh, when the saints go march - ing in.

Backing track repeats twice!

No # (sharps) in the key signature, use 2nd finger for F natural ♮.

12. EASY STREETS

Leisurely

TG



mf



Now improvise then repeat from the beginning

Accompaniment



mf



Now improvise then repeat from the beginning

2nd or 3rd finger? Look at the inside cover for help.

23. *Harvey Hotspur*

Allegro (4 bars intro on the backing track)

TG

Musical notation for the first staff, bass clef, 4/4 time signature, key signature of one sharp (F#). The music begins with a forte (*f*) dynamic. It consists of four measures of music, each containing a pair of notes (dyads) on the same pitch: G4 (F#4) in the first measure, A4 (G4) in the second, B4 (A4) in the third, and C5 (B4) in the fourth.

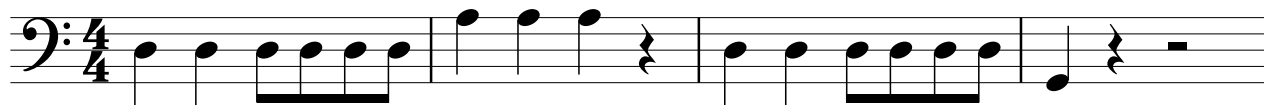
Musical notation for the second staff, bass clef, 4/4 time signature, key signature of one sharp (F#). The music is divided into two sections: "1. 1st time" and "2. 2nd time". The first section consists of four measures: G4 (F#4), A4 (G4), B4 (A4), and C5 (B4). The second section consists of two measures: a whole note G4 (F#4) followed by a whole rest. The piece concludes with the word "Fine".

Musical notation for the third staff, bass clef, 4/4 time signature, key signature of one sharp (F#). The music begins with a repeat sign. It consists of four measures: G4 (F#4), A4 (G4), B4 (A4), and C5 (B4). The second measure contains a sixteenth-note triplet (G4, A4, B4) over a whole note G4 (F#4). The piece concludes with a whole note G4 (F#4).

Musical notation for the fourth staff, bass clef, 4/4 time signature, key signature of one sharp (F#). The music begins with a repeat sign. It consists of four measures: G4 (F#4), A4 (G4), B4 (A4), and C5 (B4). The second measure contains a sixteenth-note triplet (G4, A4, B4) over a whole note G4 (F#4). The piece concludes with a whole note G4 (F#4) followed by a repeat sign and the instruction "D.C. al Fine".

Accompaniment

Allegro (4 bars intro on the backing track)



f

Fine



D.C. al Fine

